

REVISIONS				
ZONE	REV.	DESCRIPTION	DATE	APPROVED
	A	ORIGINAL RELEASE, JOB # 112239E	11/22/92	<i>WSP</i>

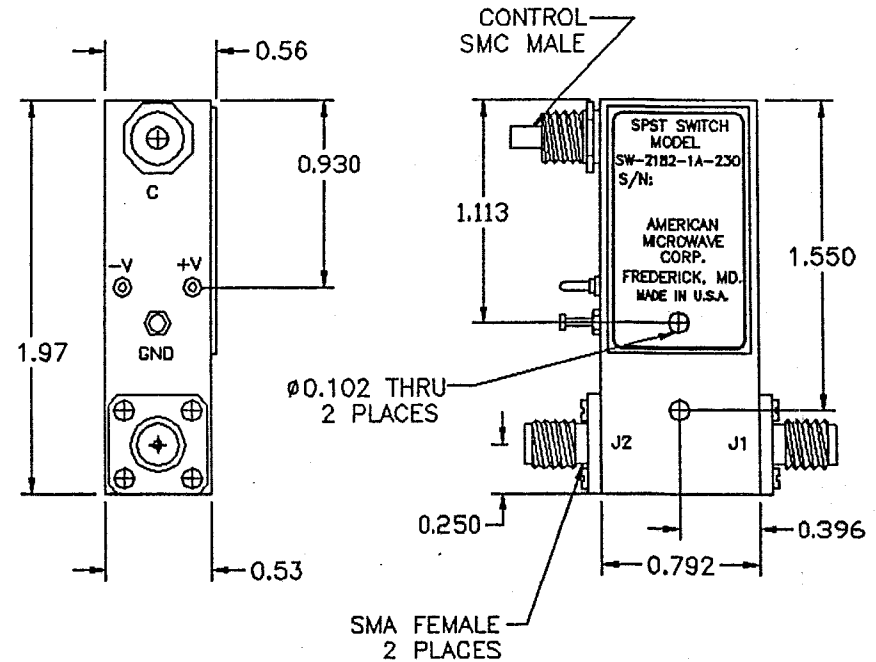
## DESCRIPTION

AMC MODEL SW-2182-1A-230 IS A REFLECTIVE SPST SWITCH MODULE WITH INTEGRAL DRIVER, CAPABLE OF HANDLING 10 W CW RF POWER OVER 8 TO 18 GHZ BAND WIDTH.

## SPECIFICATIONS

- FREQUENCY RANGE ..... 8-18 GHZ MINIMUM
- INSERTION LOSS ..... 1.9 dB MAXIMUM
- ISOLATION ..... 45 dB MINIMUM
- VSWR (ON) ..... 1.7:1 MAXIMUM
- RF POWER RATINGS ..... 10 W CW MAXIMUM (COLD SWITCHING)
- SWITCHING TIME
  - RISE (10% RF TO 90% RF) ..... 150 ns MAXIMUM
  - FALL (90% RF TO 10% RF) ..... 150 ns MAXIMUM
  - ON (50% TTL TO 90% RF) ..... 200 ns MAXIMUM
  - OFF (50% TTL TO 10% RF) ..... 200 ns MAXIMUM
- CONTROL ..... TTL COMPATIBLE, UNITY LOAD  
LOGIC "0" = INSERTION LOSS  
LOGIC "1" = ISOLATION
- POWER SUPPLY ..... +15VDC ±5% @ 55 mA MAXIMUM  
-30VDC ±5% @ 35 mA MAXIMUM
- CONNECTORS
  - RF INPUT/OUTPUT ..... SMA FEMALE
  - POWER ..... SOLDER PIN
  - CONTROL ..... SMC MALE
- SIZE ..... 0.792" x 1.97" x 0.56"

## MECHANICAL OUTLINE



- NOTES:
- 1) DIMENSIONS ARE IN INCHES
  - 2) TOLERANCES: X.XX ±0.020  
X.XXX ±0.010
  - 3) WEIGHT: APPROX. 1.3 OZ

## AVAILABLE OPTIONS

- A01 ..... 50Ω CONTROL IMPEDANCE
- A02 ..... 100Ω CONTROL IMPEDANCE
- A03 ..... INVERSE CONTROL LOGIC (LOGIC "0" ISOLATION)
- A04 ..... VIDEO FILTER (0.5 dB EXCESS LOSS)
- A08 ..... SINGLE ENDED ECL LOGIC
- A09 ..... BALANCED ECL LOGIC (SOLDER PINS)
- A14 ..... J1 SMA MALE, J2 SMA FEMALE
- A15 ..... TWO SMA MALE CONNECTORS
- A16 ..... SOLDER PIN CONTROL TERMINAL
- A17 ..... SMA FEMALE CONTROL TERMINAL
- A18 ..... CANNON MULTIPIN MDM9SSP

## ENVIRONMENTAL RATINGS

- TEMPERATURE ..... -55°C TO +95°C (OPERATING)  
-65°C TO +125°C (STORAGE)
- HUMIDITY ..... MIL-STD-202F, METHOD 103B COND. B
- SHOCK ..... MIL-STD-202F, METHOD 213B COND. B
- VIBRATION ..... MIL-STD-202F, METHOD 204D COND. B
- ALTITUDE ..... MIL-STD-202F, METHOD 105C COND. B
- TEMPERATURE CYCLE ..... MIL-STD-202F, METHOD 107D COND. A



## AMERICAN MICROWAVE CORPORATION

7311G GROVE RD., FREDERICK, MD. 21701  
TEL: (301) 662-4700 FAX: (301) 662-4938

### PRODUCT FEATURE

**SW-2182-1A-230**

8-18 GHZ, REFLECTIVE, 10W SPST SWITCH MODULE

SIZE A SHEET 1 OF 2 DWG. # 100-2890

APPROVALS	DATE
DRAWN <i>WSP</i>	11/22/92
CHECKED <i>[Signature]</i>	11/22/92

1-21